

# SUSANNA

BEVERLY HILLS  
DESIGNER FOR WOMEN

,CUSTOMER NAME: \_\_\_\_\_ DATE: \_\_\_\_\_

SHIPPING ADDRESS: \_\_\_\_\_

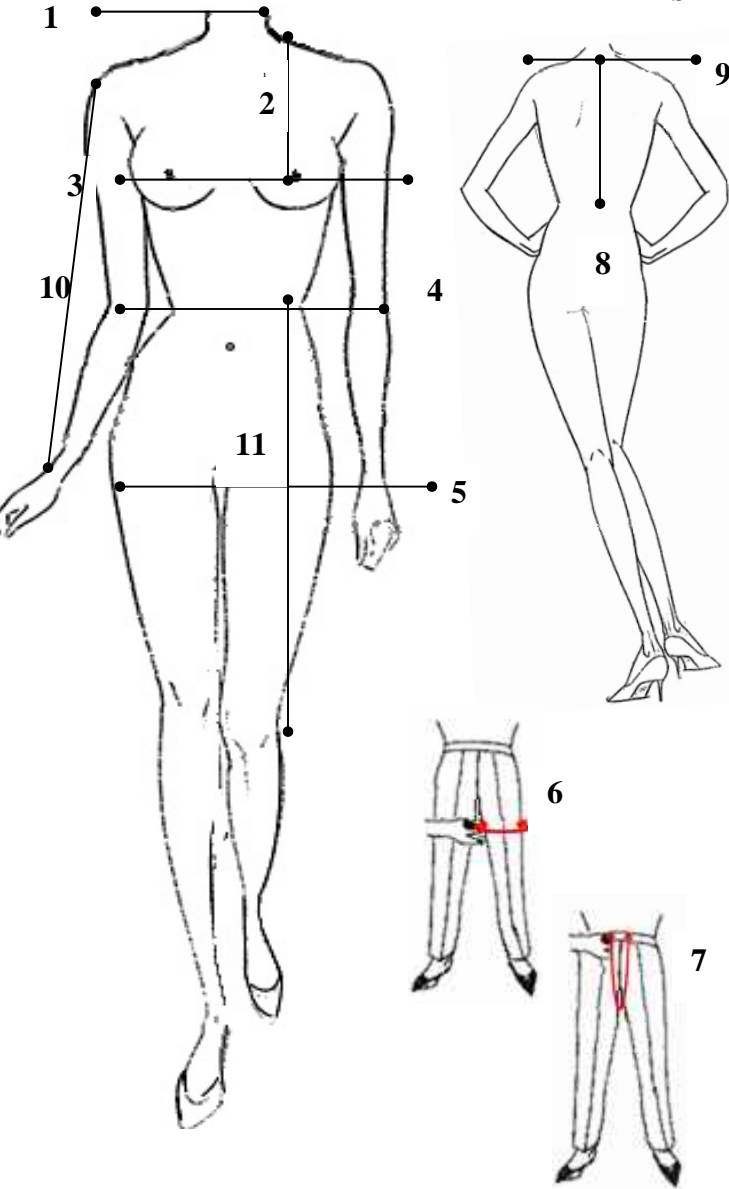
CITY: \_\_\_\_\_ STATE: \_\_\_\_\_ ZIP: \_\_\_\_\_

HOME TEL: \_\_\_\_\_ CELL: \_\_\_\_\_

EMAIL: \_\_\_\_\_

## MEASUREMENTS

HEIGHT: \_\_\_\_\_



- 1) NECK: \_\_\_\_\_ INCHES
- 2) SIDE OF NECK ON SHOULDER TO NIPPLE POINT: \_\_\_\_\_ INCHES
- 3) BUST AROUND FULLEST PART OF BOSOM: \_\_\_\_\_ INCHES
- 4) AROUND WAIST: \_\_\_\_\_ INCHES
- 5) HIPS AROUND FULLEST PART OF DERRIERE: \_\_\_\_\_ INCHES
- 6) THIGHS UNDER THE DERRIERE AND AROUND THE LEG:  
\_\_\_\_\_ INCHES
- 7) CROTCH FROM FRONT WAIST LINE, THROUGH LEGS, TO  
BACK WAISTLINE: \_\_\_\_\_ INCHES
- 8) BACK OF NECK AT NAPE TO WAIST: \_\_\_\_\_ INCHES
- 9) SHOULDERS ACROSS SHOULDERBLADES: \_\_\_\_\_ INCHES
- 10) SLEEVES FROM SHOULDER TO WRIST: \_\_\_\_\_ INCHES
- 11) SKIRT LENGTH WAIST TO HEM \_\_\_\_\_ INCHES
- 12) INSEAM CROTCH TO ANKLE: \_\_\_\_\_ INCHES

Measure from the top of the waist band in the front to the top of the waistband in the back

PLEASE FAX THIS FORM TO US AT SUSANNA BEVERLY HILLS 310.275.0203 OR

EMAIL US AT SUSANNA@SUSANNABH.COM